



PITCH DECK

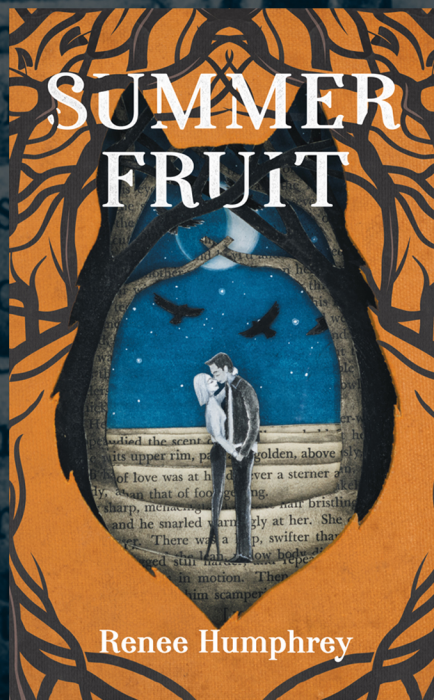
Summer Fruit

by Renee Humphrey

SUMMER FRUIT

by Renee Humphrey

"A haunting mystery of wolves, trauma, and redemption on a myth-soaked island"





A reclusive former prodigy and a troubled ex-soldier must face the shadows of the past—human and supernatural—when a body washes up on their isolated island, unraveling long-buried secrets

Series or Film Concept

Format: Limited series (6–8 episodes) or prestige drama feature

Tone & Genre:

Literary mystery, character-driven suspense, eco-gothic drama with speculative undertones

Comparable to *The OA*, *Mare of Easttown*, *Sharp Objects*, *Where the Crawdads Sing*

Core Elements:

- Multiple POVs
- Strong atmospheric setting
- Psychological unraveling
- Indigenous mythology & mental health themes

Main Characters

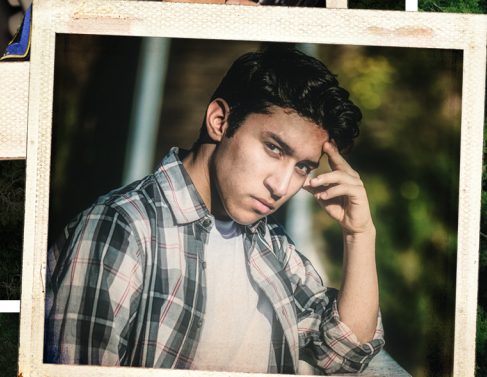
Jack Karlsson: Ex-musical prodigy, haunted by guilt, reclusive, deeply tied to wolves

Tomas Weber: Ex-soldier with PTSD, battling addiction & ancestral myths

Esther: Estranged niece, anorexic, seeking connection & truth

Sahara Moses: Indigenous paramedic/cop, caught between tradition & law

Luis: Jack's assistant, struggling with the legacy of his father's sins





Thematic Depth

Found family & generational trauma

Ecological grief & rewilding

Indigenous wisdom vs. Western systems

The psychology of guilt, forgiveness & survival

The beast within as metaphor for trauma & mental health



World of the Story

Hollow Island:

Pacific Northwest, cut off from modernity

Visual Tone:

Moody, overcast skies, lush green forests, coastal cliffs

Local Legends:

Nagual / God Stone / shapeshifters

Imagery:

Tugboats, wolf sanctuary, volcanic stone beaches

Pilot Episode / Opening Scene (TV) or Key Opening Sequence (Film)

- Tomas finds a body washed up on Red Moon Beach
- A storm threatens; wolves howl in the distance; cut to Jack recording their calls
- Quick cuts to: Esther booking her ticket, Sahara startled by a raven, a flash of Jack's hallucinations
- End with: The island's silence, broken only by the wind and the waves. Title appears.

Visual & Cinematic Style

Visual comparisons:

- *The Killing* (US)
- *The OA*
- *Dark*
- *Twin Peaks*

Camera style: Slow tracking shots, natural lighting, soft color grading, use of silence

Music: Atmospheric sound design with classical motifs (to reflect Jack's composer history)

Supernatural undertones are subtle—more spiritual than horror genre

Target Audience & Market Potential

Audience: Adult viewers who enjoy layered mystery, slow-burn suspense, character-driven stories

Comparable IPs:

- *Mare of Easttown*
- *Outer Range*
- *The Leftovers*

Niche hooks:

- Indigenous stories & myth
- Mental health & trauma exploration
- Wolves & environmental justice
- Female-driven subplots & ensemble casting



Mystery • Myth • Madness • Motherhood • Moral Complexity

Contact Information

Rights availability:
Film/TV/Streaming rights available

Contact
Renee Humphery
email@gmail.com

*Thank you for considering Summer Fruit. We believe its
heart, mystery & wildness are ready for the screen.*